

BROOKLYN

ARMCHAIR

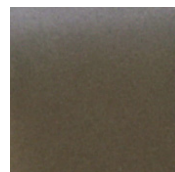


BROOKLYN

ARMCHAIR

- 40x10T black coated metal frame;
- High density and elasticity soft foam on seat;
- Removable back cushions with goose feather & silk cotton;
- KD<Knock Down>style, maximum the container capacity.
- Suit for all places; Classic designs; comfortable,KD, Small and safe pakage;

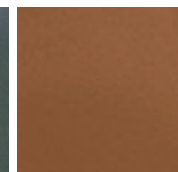
COLOR AVAILABLE:



CARBON GREY



CHARCOAL GREY



COCOA



DIMENSION: 70CM X 80CM X 80CM (H)

SEATING HEIGHT: 40 CM