

# BROOKLYN

THREE SEATER

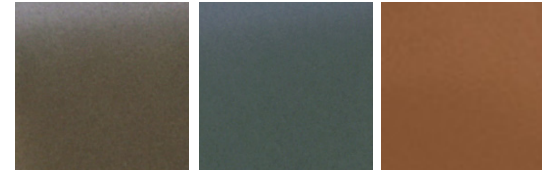


## BROOKLYN

THREE SEATER

- 40x10T black coated metal frame;
- High density and elasticity soft foam on seat;
- Removable back cushions with goose feather & silk cotton;
- KD<Knock Down>style, maximum the container capacity.
- Suit for all places; Classic designs; comfortable,KD, Small and safe package;

COLOR AVAILABLE:



CARBON GREY

CHARCOAL GREY

COCOA



DIMENSION: 180CM X 80CM X 80CM (H)

SEATING HEIGHT: 40 CM